

LARK CIRCLE SUBDIVISION

PART OF BLOCK 4 MOUNT OGDEN ADD'N. ALL OF LOTS 17,
18, 19, & .PT. LOTS 20, 25 & 26 AMENDED PLAT OF BURTON PARK ADD.

TAXING UNIT: 25

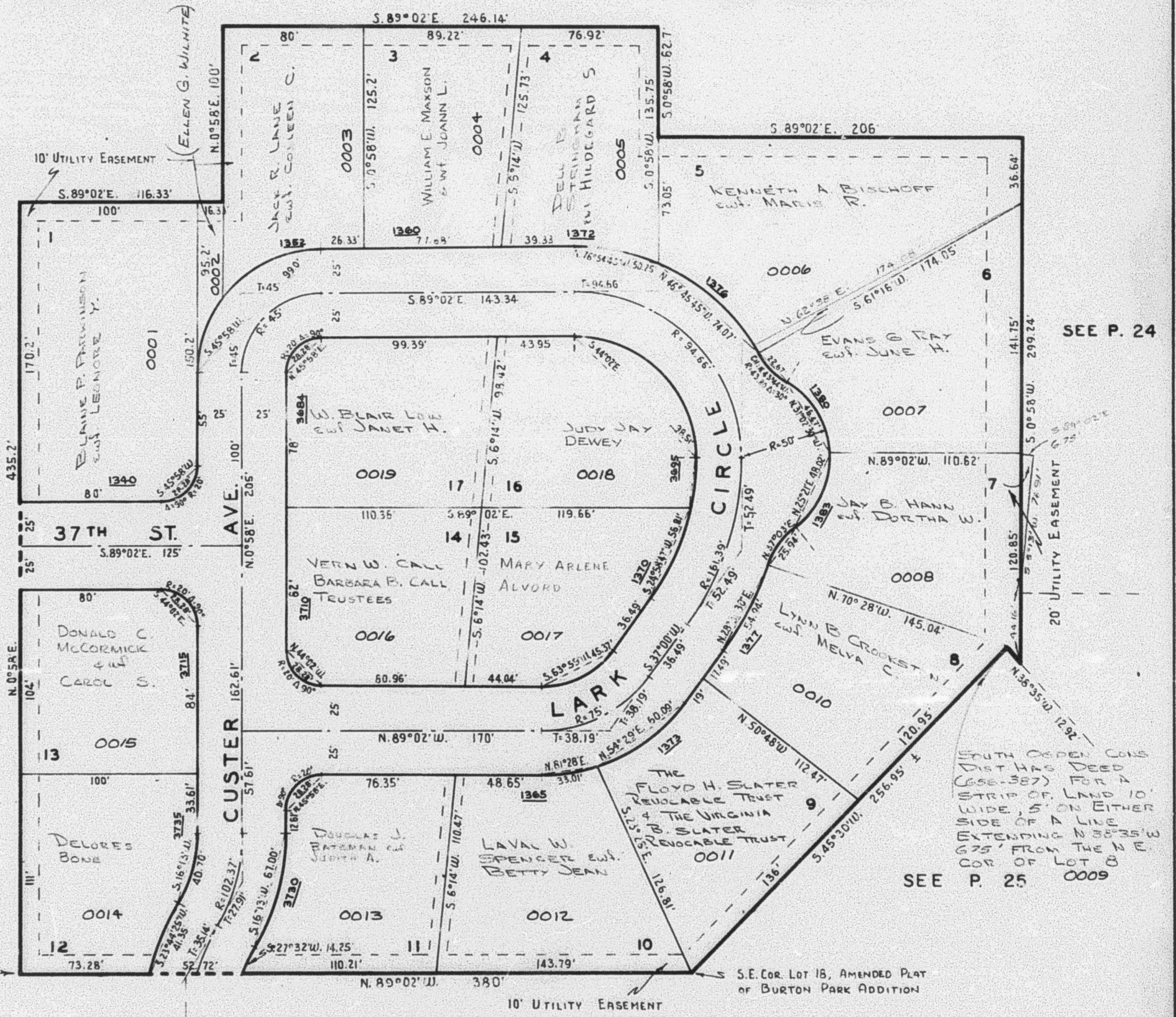
IN OGDEN CITY

PREFIX: 05-030

SCALE: 1"=50'

SEE P. 29

SEE PAGE 24



SEE P. 29

NOTE
FOR COMPLETE ENGINEERING DATA,
SEE ORIGINAL PLAT BOOK 10, P. 45

S.W. COR. OF LOT 17, AMENDED
PLAT OF BURTON PARK ADD.

S.E. COR. LOT 18, AMENDED PLAT
OF BURTON PARK ADDITION

SEE P. 26